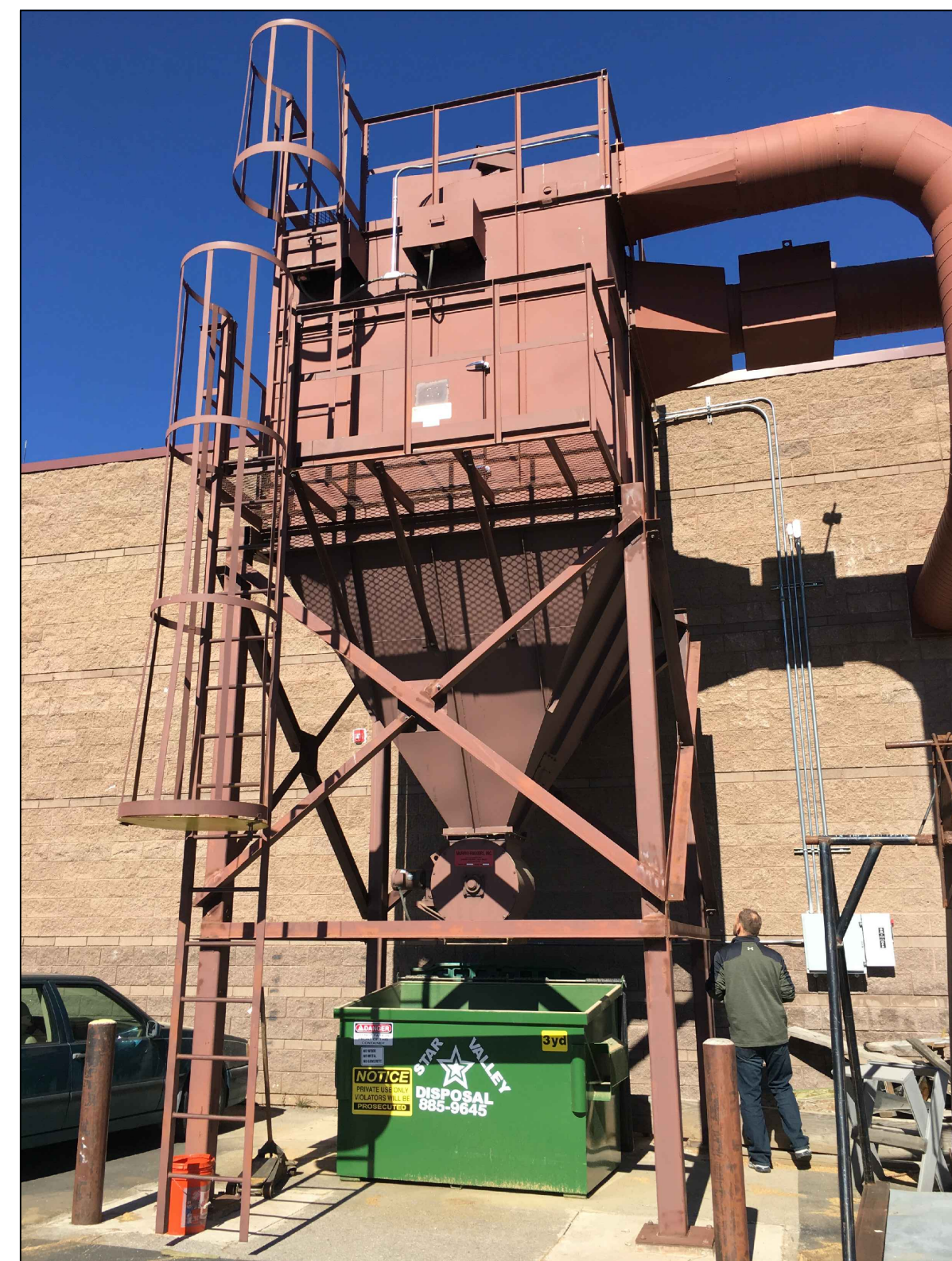
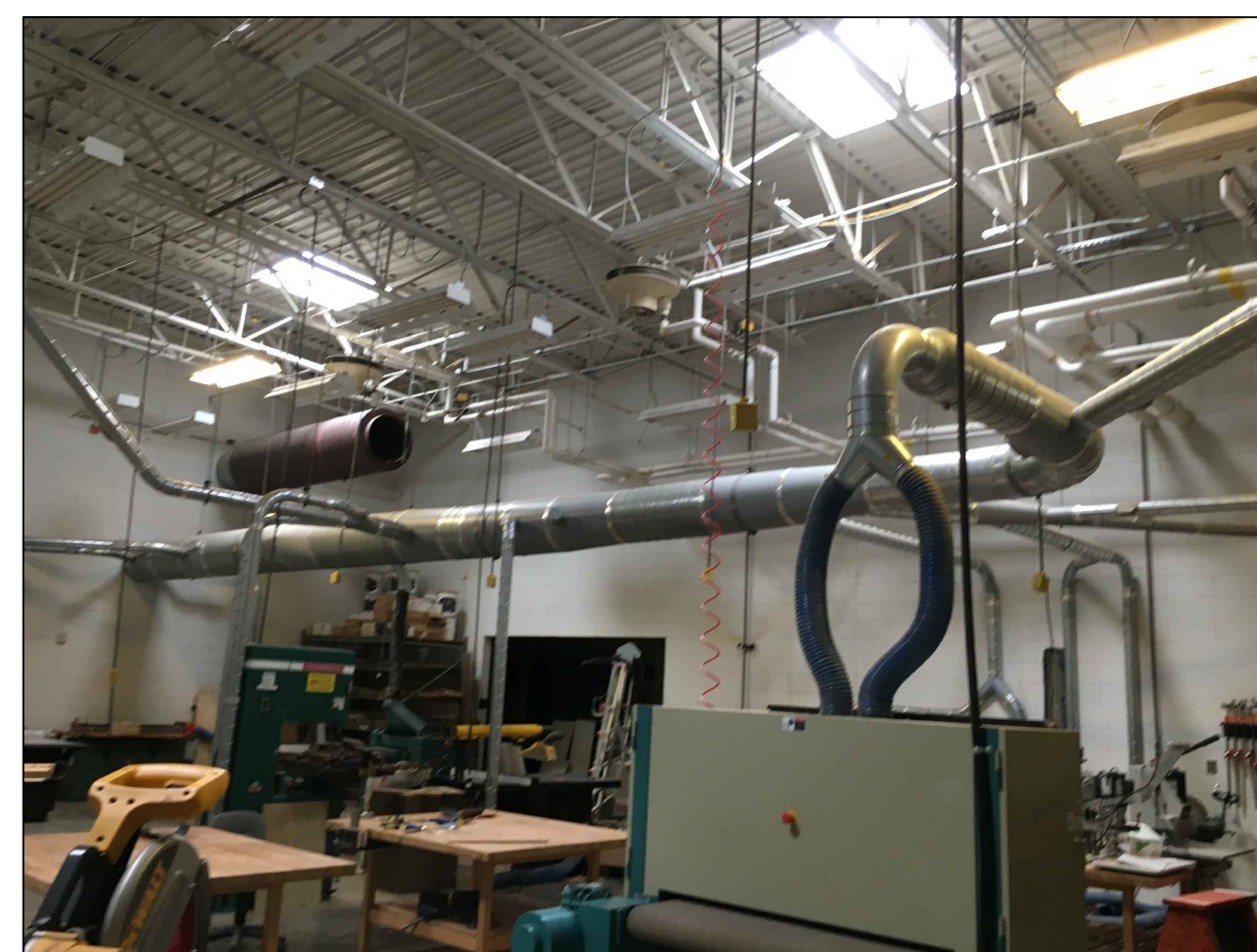


MAIN LEVEL MECHANICAL DEMO PLAN

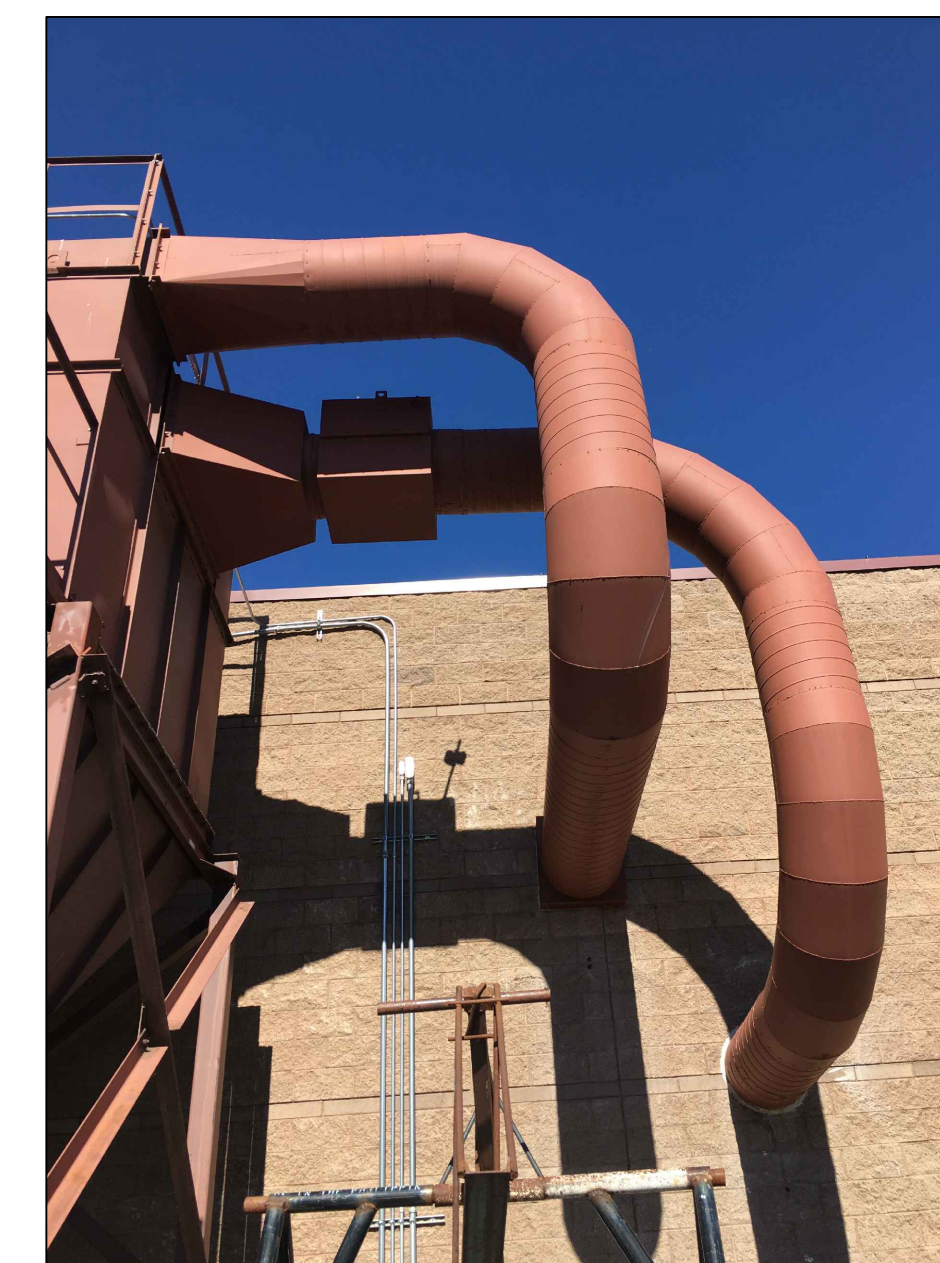
SCALE: 1/8" = 1'-0"



PICTURE 1
NO SCALE



PICTURE 2
NO SCALE



PICTURE 3
NO SCALE

PLAN NOTES:

- ① SAM DUST COLLECTOR TO BE RELOCATED, DISASSEMBLE AND RE-ASSEMBLE AS REQUIRED, REMOVE AND REPLACE DUCT AS REQUIRED FOR NEW DUCT ROUTE. FIELD VERIFY EXISTING DUCT SIZE. SEE SHEET M1.1 & M2.0 FOR NEW LOCATION AND ROUTE.
- ② FIRE DAMPER TO REMAIN. PROTECT DURING CONSTRUCTION.

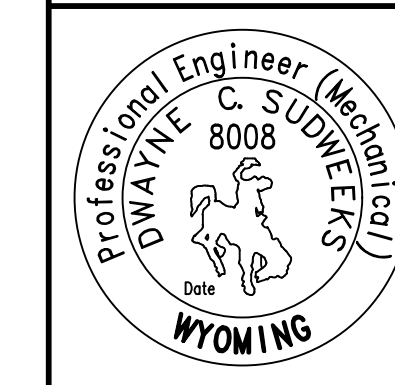
MECHANICAL LEGEND

SYMBOL	DESCRIPTION
①	ELECTRONIC THERMOSTAT
⊕	EQUIPMENT SYMBOL
HD	HAND DAMPER
⊕	ROUND BRANCH DUCT WITH HAND DAMPER
⊕	INSULATED FLEXIBLE DUCT
⊕	RETURN AIR OR EXHAUST GRILLE
⊕	CEILING DIFFUSER
⊕	ROOF MOUNTED UPBLAST EXHAUST FAN

GENERAL NOTES:

- A- THE CONTRACTOR SHALL CHECK AND VERIFY ALL DIMENSIONS AND CONNECTIONS ON THE JOB SITE. ALL WORK SHALL BE EXECUTED FROM MEASUREMENTS TAKEN AT THE SITE.
- B- THE MECHANICAL CONTRACTOR SHALL BE RESPONSIBLE TO INSURE PROPER CODE CLEARANCES FOR ELECTRICAL AND MECHANICAL ACCESS WHEN INSTALLING ANY EQUIPMENT SUPPLIED BY THE MECHANICAL CONTRACTOR.
- C- IT IS CRITICAL THAT THIS CONTRACTOR COORDINATE EQUIPMENT LOCATIONS WITH PIPING, DUCTWORK, ELECTRICAL CONDUIT AND BUILDING STRUCTURE TO INSURE CODE COMPLIANCE.
- D- CEILING DIFFUSERS ARE SHOWN IN APPROXIMATE LOCATIONS. REFER TO LIGHTING PLANS AND REFLECTED CEILING PLAN FOR EXACT LOCATIONS.
- E- DUCT DIMENSIONS CALLED OUT ON DRAWINGS ARE INSIDE FREE AREA DIMENSIONS. ACOUSTICAL DUCT LINER ARE TO BE ADDED TO OVERALL MEASUREMENTS.
- F- ALL DUCTWORK AND PIPING WHICH PASSES THRU FIRE RATED WALLS TO BE FIRE STOPPED WITH APPROVED FOAM OR SEALANT. REFER TO SPECIFICATIONS FOR APPROVED MANUFACTURES.

ORIGINAL DRAWING SIGNED BY: DWAYNE C. SUDWEEKS
 DATE ORIGINAL SIGNED: Jan 25, 2019
 ORIGINAL ON FILE AT ENGINEERED SYSTEMS ASSOCIATES
 1355 EAST CENTER, POCATELLO, IDAHO 83201



Engineered Systems Associates
 1355 EAST CENTER
 POCATELLO, IDAHO 83201
 PHONE: (208) 233-0501
 FAX: (208) 233-0529
 EMAIL: esa@engsystems.com
 ESA JOB NUMBER: 16082

nw architects p.a.
 ARCHITECTURE PLANNING INTERIORS
 SCOTT L. NIELSON, A.I.A. KEVIN R. BODILY, A.I.A. JAMES H. WYATT, A.I.A.
 900 JOHN WILKES PARKWAY, P.O. BOX 2212 - HONOLULU, IDAHO 83402-2212
 (P) 208-522-8779 (F) 208-522-8765 (W) nw-architects.com

TECHNICAL CAREER CENTER FOR:
STAR VALLEY HIGH SCHOOL
 LINCOLN COUNTY SCHOOL DISTRICT NO. 2
 445 SWIFT CREEK LANE, AFTON, WYOMING 83110

PROJECT:
 SHEET TITLE:

REVISIONS

NO.	DESCRIPTION

PROJECT NO. 16061
 DATE: MARCH 2019
 DRAWN BY: T DRAVIS
 CHECKED BY: D SUDWEEKS

DRAWING NO.:

M1.0